

**Official Betmar Site**  
**A 55 & Older Community**



COFFEE NEWS UNLEADED.....

COFFEE NEWS PREVIOUS EDITIONS

BETMAR COMMENTS.....

SUBMIT AN ARTICLE FOR THE NEXT COFFEE NEWS

# BETMAR COFFEE NEWS

## Dec 19, 2023

Submitted by Michelle McKinnon and photos by Brenda Moody, Rita Jones , Kathy downer, Mary-ann Gifford, Lynn MacDonald  
Videos Betmar Video Club

## GOOD MORNING BETMAR FRIENDS!!

### TUESDAY AT COFFEE:

## GIFT EXCHANGE DAY











## MICHELLE'S MESSAGE



I hope you are just as busy as I am and enjoying all the festivities! This week we had shuffle lunches, Gaylord Palms, house tours, golf cart parade, the Kitchen Band in the Gazebo, Music and Entertainment concert, and many other activities to choose from! Mac and I are looking forward to some down time by surprising our kids and flying to Michigan for Christmas. The kids keep laughing about my memory, but they won't be when there are no eggs under the tree. HAHA-have a great week! Merry Christmas!!

## SHOUT OUTS-Betmar Office Workers

Jan Slater (10 years) Office Administrator/Community Manager

Denise Butler(5 years) Office Clerk

Kaylynn Scott (2 ½ years) Admin. Assistant/Accounts Payable

Tina Perrras (2 years) Administrative Assistant

Candy Bayless (1 year) Data Entry Clerk



## NEW RESIDENTS

Mick and Debbie Reith (NY)



New Residents-Colette and Ron Paquette  
from Alberta, Canada on Niles Drive

## ACTIVITIES:

A big thank you to Barb Vlieg for organizing the Christmas Golf Cart Parade. It was fabulous! Thank you also to Betmar Security for blocking the streets for us!!

NO COFFEE HOUR DECEMBER 26<sup>TH</sup> AND JANUARY 2<sup>ND</sup>. COFFEE NEWS WILL GO OUT SO GET YOUR INFORMATION TO ME BY 7PM MONDAY EVENINGS.

FYI-operating policy and procedure 101 Titled advertising, ticket sales and publicity specifically say *tickets may be sold at any time, however, no sales may take place at coffee hour until three weeks prior to the event.*

Please make sure your club is aware of this policy-thank you



Multi Club Christmas Tree Raffle – Garden, Golf and Swim clubs came together to offer the Christmas Tree Raffle this year and the winner was drawn at Coffee Hour today and the winner was Becky Staley, congratulations Becky. Becky's words upon winning "I have 200 new friends today" although not requested Becky and her winnings were escorted, safely, to her golf cart. Thank you to everyone that donated to make the tree so amazing, to those that bought 'tickets' for their chance to win and of course to all the sellers for the clubs. But a special shoutout to Brenda Lapierre from swim, Marilyn Loding from Garden Club and Terri Williams from Golf, for taking a chance on a concept of a multi club event for Betmar. Thank you to Sue Flynn as well for all your time and energy on selling tickets. Betmar is a better place due to all your efforts, everyone. Tip of the hat to you all.

THANK YOU JOHNNY ELLIS and DANNY LEE FOR THE WONDERFUL SONGS THIS MORNING

DECEMBER COFFEE WORKERS FOR THE MONTH-THANK YOU-WE COULDN'T DO IT WITHOUT YOU-KUDOS TO CINDY AND DAVE GODFREY FOR RUNNING THE SHOW

Joanne LaVere	Barb Vliek	Linda Hafey
---------------	------------	-------------

Colleen Carson	Bruce Carson	Joyce Smith
----------------	--------------	-------------

Linda Ames	Linda Whitig
------------	--------------

Randy LaVere	Ed Perkins
--------------	------------

Dave Godfrey	Lynn McDonald
--------------	---------------

Cindy Godfrey	Paul Reed
---------------	-----------

Kris Send	Rosiland Reed
-----------	---------------

Grace Ave. Residents. Please remember to put out your Luminaries on Christmas Eve. If anyone has any plastic jugs, please bring them to the annex. We have a box there. If you live on grace and need jugs hopefully you may find some there.

## Upcoming Blood Drive: Betmar Acres

January Gifts-\$20 egift card/Oneblood Long sleeve T-Shirt

Drive Date: January 2nd

*Click on the Link to Schedule Donation Time↓*

[https://donor.oneblood.org/donor/schedules/drive\\_schedule/1350840](https://donor.oneblood.org/donor/schedules/drive_schedule/1350840)

Christmas Eve: closed at 5:00pm

Christmas Day: closed all day, will open at 7:00am on Tuesday 12-26-23

New Years Day: closed all day, will open at 7:00am on Tuesday 1-2-24

Golf courses will be open to play.

The following meetings for the Betmar Owners, Inc and Betmar Acres Club, Inc Board of Directors will be held this week:

Tuesday, Dec 19, 2023 – Agenda meeting – 10:00 a.m. in Clubhouse 2 Annex

Thursday, December 21, 2023 – Board of Directors for Owners and Acres Meeting – 9:00 a.m. in Clubhouse 2 Annex

## MUSIC AND ENTERTAINMENT

Congratulations to the Music and Entertainment performers on their Incredible Christmas Spectacular show! It was a great way to help us get into the Christmas spirit! Thank you!

Music Entertainment, Friday night, 7:00 p m, CH#3. Don't want to miss this one. The Main Duo plus one will be putting on the show!



## CHORUS:

— Volunteers needed for baking and finger foods for Jan 14- the Linda Lafayette memorial service. Please have the food in the kitchen in Clubhouse 2 by 12 noon. Memorial is from 1-3 pm

Save the date for the Betmar memorial for all residents who passed away in 2023 on January 21 Club house 2.

## BOUNTIFUL BLESSINGS

Bountiful Blessings is so happy to announce that every resident on our Christmas Basket List will be receiving a ham. The Christmas Baskets contain shelf stable food and there is a surprise in each one. Thank you to everyone who has made this distribution possible.

The baskets will be delivered on Wednesday, December 20<sup>th</sup>, between 11:00am and 1:00pm. If you are not going to be home, please leave a cooler to put the ham in. We will not leave the ham if you are not home and a cooler is not provided.

The Cupboard here at Bountiful Blessings is different. We do not hand you a bag full of food of our choice. You get to go shopping – just like the grocery store. BB is totally resident supported, and everyone is so grateful for the items received. We thank everyone who has donated to The Cupboard. The Cupboard will be closed December 24<sup>th</sup> & 25<sup>th</sup> and December 31<sup>st</sup> and January 1<sup>st</sup>.

As a result of our resident's requests, we will be accepting the walkers with the seats. No other medical equipment will be accepted.

## ART CLUB

Beginners Art is cancelled for the Wednesday after Christmas, December 27

## DANCE CLUB

Saturday Night Christmas Dance – join us in Clubhouse 2, 7-10 pm for dancing to the 60s, 70s, and 80s music of the GOOD STUFF BAND.

\$5.00 per person, doors open at 6pm. Contact Pam Ward for advanced tickets, 989-859-6905

No Saturday night dance on Saturday, Dec 30th.

New Year's Eve Dance – Karl Sapp will play us into the new year. Tickets are \$20.00 per person and include light refreshments, party favors and a champagne toast. Contact Mary Shedd, 813-715-2051 or Maxine Bailey, 813-715-4323 for tickets.

No line dance classes on Christmas day or New Year's Day. Tuesday and Thursday classes will be held.



# GOLF CLUB

Night Golf is scheduled for December 26.

Please stop by The Pro Shop “early” for the Glo-Balls you need to play the game. The shop is open 6 days a week for your shopping pleasure.

- Breakfast tickets are available for the Jan. 6<sup>th</sup> Casserole breakfast. Remember \$5.00 pre-event pricing and \$8.00 at the door. So, save money get your tickets early as this helps the breakfast crew to plan accordingly for the needs of the breakfast.
- Quilt tickets are still available for the drawing, winner to be drawn at the Uno Fun run for all Betmar residents, planning on the week of 20<sup>th</sup> of February 2024.
- What Not Sale Jan – Callaway representative is planning on being here during the What Not Sale.
- More details to come on the Chili Cook off for the end of January.
- Golf Maintenance Committee and the Golf Board have approved the replacement signage budget for the “Golf Wall of Betmar Dr., now to finalize the color and get on order and installed.
- Membership renewals are happening now and so many ‘new to golf’ people are signing up, great to see. So don’t miss out and join the Golf Club, meet some great people, and enjoy the outdoors.
- Night Golf the 27<sup>th</sup> of December.

Merry Christmas and Remember with the new year it’s a Golf Year – Twenty, twenty FOREEEEEEE.

# COMPUTER CLUB:

Today will be our last computer club meeting until January 9th. At 1:00 the class will be on Android Phone settings. At 2:00 bring in the devices you are having problems with and we will help you.

## TABLE AND CHAIR SET UP:

Block assignments for Table & Chair volunteers are published in each month's Betmar Bulletin. Blocks are mapped out on page 28 of the phone book. The block assignment for the second half of December is Blocks E & F (east end of Lakewood, Joyce & Barbara). A map with blocks shown is on page of the phone book.

Schedule for this period follows:

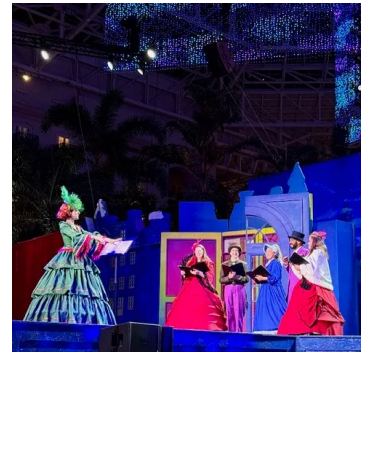
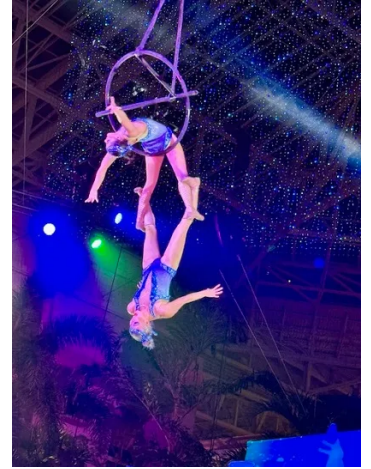
Wed 12/20 8 am      Bandstand (major)

Sat 12/23 8 am      Dance (major)

## BETMAR TRAVEL GROUP

Two big, chartered buses with close to 100 of us traveled to Gaylord Palm Resort to have an excellent dinner, Cirque Christmas show, and Charlie Brown Ice Themed Sculptures. We all had an amazing time!







## AROUND BETMAR:

home tour

Ice Slide at Gaylord Palms iCE sHOW

Kitchen Band in the Gazebo

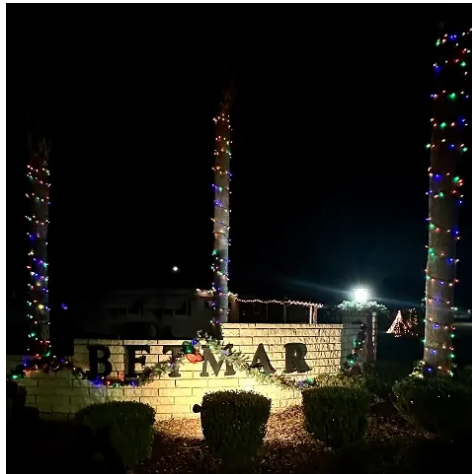
Merry Christmas From US M and M



Thomas Promise











Santa and Mrs. Claus pay a home visit to one of their biggest fans.  
FANTASTIC JOB SANTA (RANDY STEWART) AND ELF (KALE LADWIG-VISITOR FROM IOWA)



Christmas Golf Cart Parade



## LIBRARY:

GREAT news! The wonderful residents of Betmar have voted and we are getting a major remodel of the library coming very soon! Stay tuned and we will keep you updated as we get new information. Thank you to the Betmar Board and the residents who voted Yes.

Thank you to the Patrons who donate books and puzzles. We appreciate you. Thank you to our special couple that continue to take care of our beautiful flowers. "Bookmark? You mean a "quitters strip". Unknown"

Our January meeting is on the 11th at 9:00 A.M. in the library. All Betmar residents are welcome, and we ask that our Library workers please attend.

## GAMES

Pony, in Apache CH on Wednesday December 20, at 11:30 please bring finger food to share and your own beverage. Cards will begin at 12:30 pm

For those interested in doing an "Introduction to tournament play" session to prepare for the upcoming Mahjongg tournament, we have 2 sessions scheduled. They are: Thursday, January 4th at 6:00 pm, and Saturday, January 6th at 1:00 pm. Both will be in the Annex. You can RSVP to me at [krnemery@gmail.com](mailto:krnemery@gmail.com) or call me at 989-329-6450. If possible, please plan on bringing along a Mahjongg set, as we will be doing some practice of timed rounds. If there is enough interest, we can also do some practice rounds at the regular Mahjongg time on Monday and Friday at 1:00 pm in the Maple leaf room at Apache Clubhouse. There is still time to sign up for the Tournament on February

3rd, but it is filling up fast, so don't procrastinate. You wouldn't want to miss out! Thank you, Karen Emery

Beginning cards will take place at 10:15-10:30 following coffee hour starting today. We will be at Apache Clubhouse and would love to see anyone who wants to learn Pony or Liverpool Rummy or anyone who feels they need to brush up on the game(s). Don't be shy or nervous about learning how to play. We are there to help you.

This next Thursday night is the last week we're playing Bunco for the 2023 year. (I thought it was last week, but this one will be the last one until Mary Sue comes back after Christmas) 🎄

Bring your dollar to play, and If you'd like to bring a snack to share, feel free! We begin promptly at 6:30 so come early so we have seats set up for everyone. Party on! 🎉 🎄 🎲 🎲 🎲

## TOPS

Merry Christmas to our Betmar Family.

## MAINE DUO + ONE

Scratch the Main Duo for this week-will be on Friday night for Music Entertainment-there is a show at 7:00 p m CH3



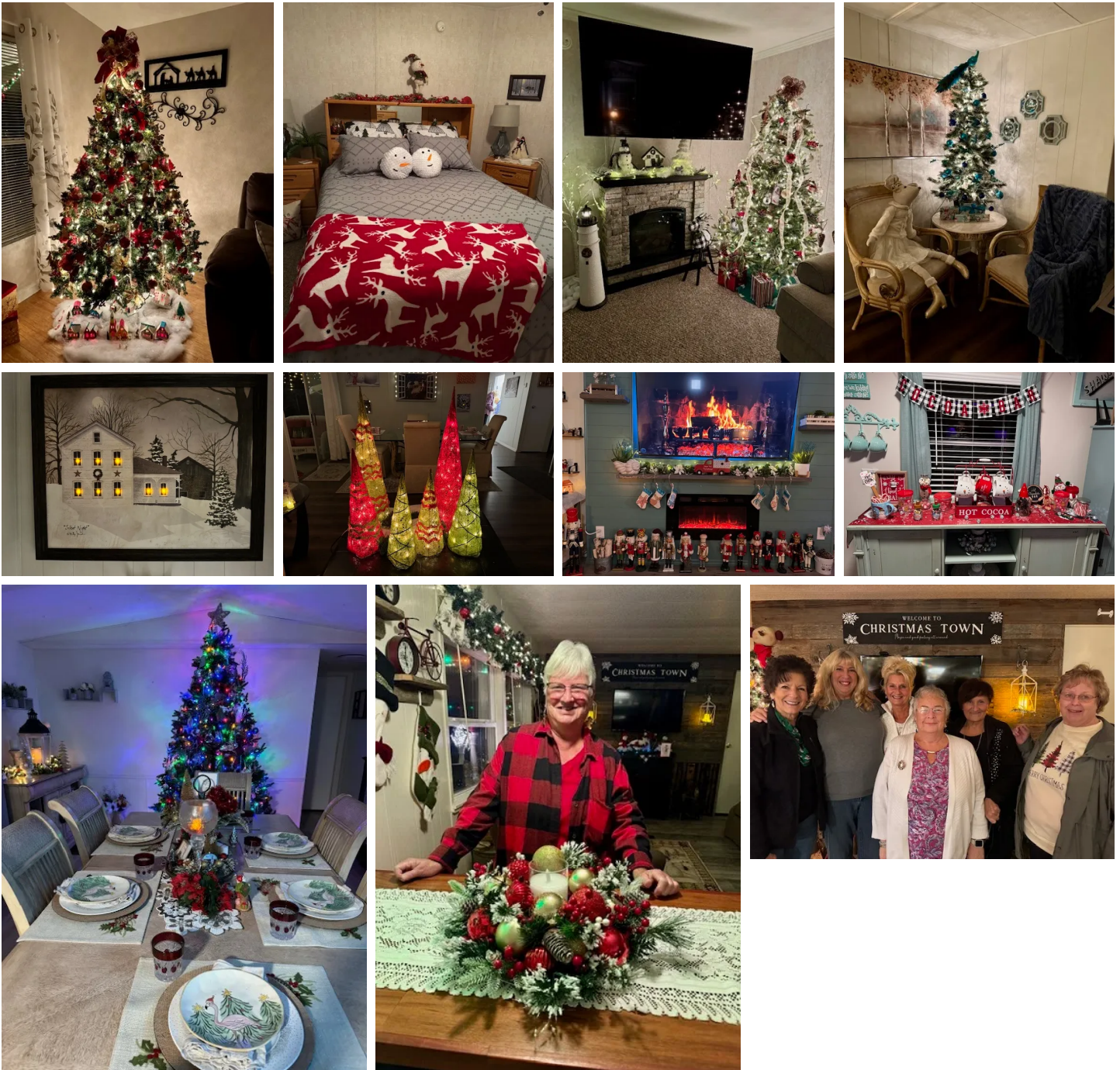
## TENNIS/PICKLEBALL CLUB:

We would like to thank all the festive folks that supported the Tennis & Pickleball Club by attending the Christmas Homes Tour. What a great turnout we had. Our heartfelt thank you's to the hosts that opened their homes and hearts to the 2023 Christmas Homes Tour. Also a huge THANK YOU to the folks that helped the hosts. The homes were visited by over 200 festive guests.

The Centerpiece for the door prize was won by Theresa Phifer. Congratulations, Theresa!







On Friday, December 8, some of the pickleball players and other Betmar residents met in the Annex and wrapped over one hundred more gifts for Thomas Promise. This was in addition to the 250 gifts wrapped previously. Those participating were Belinda Anderson, Alice Poole, Barbara Kadamus, Patty Moors, Lorna Bradstreet, Bonnie Hunt, Barbara Kerr, Kathy Firman, Cindy Cutter, Rita Glieden, Holly Hefner, Barrie Fernald, Sue Spahr, Eileen Fields, Pat Norton, Kathy Bolduc and Darlene Paine. Thanks, everyone! Joe from Thomas Promise sends a huge THANK YOU! The pickleball club is holding an event in CH2 on the 7th of JANUARY. WE only have a few weeks to sell the tickets, so I was hoping you could announce the event at coffee with us selling tickets there and also they can contact me at 603-325-0884, Laraine Roberts 517-230-2231 and Sue York 207-974-8885.





Florida Senior Games medal winners: Jim Pflaidner, Tom Frain, Jimmie Stokes, Robin Meek, Karen Quinlan and Rita Jones. Absent: Sandy Bedingfield

## THEATRE:

Looking for a piano player to record music, a flute player and a thechi person to help tranfer music from the computer to disc.

If you are one of these talented people please call Terry Phifer 440-537-1508

## TRIVIA:

There will be no trivia quiz for the next two Sunday's due to Christmas and new year.

Happy Holidays everyone!

## WHAT NOT SALE

Here is the current list of where we need additional volunteers. **Department Heads**, please contact the volunteers on your list to see if they are still available. Once you determine how many more volunteers you need, let us know. We will not be sending any volunteers to your department unless you inform us of your needs. Please let us know if you are all set as well. This list will be updated weekly.

### HELP WANTED

(volunteers needed for the January 11-13th What-Not Sale)

Number & lengths of shifts flexible

Department	Additional volunteers needed
ANT MARCH – need all able-bodied persons (anyone who can carry a box) to help unload the What-Not Barn at 9 a.m. on Wednesday, Jan 10 <sup>th</sup> . No need to get your name on a list. Just show up	200+

and we will direct you, PLEASE!!!!!!	
CLOTHING MEN'S	1
GLASSWARE & DISHES	4 people to carry boxes during Wed. AM setup
HARDWARE & TOOLS	2
SHARE THE WEALTH — Judy Whitkopf needs more people to help with selling tickets. If you are not a shy person, she needs you for some short periods to help give away money to lucky people.	2
SHOES, LUGGAGE & PURSES	1

If you would like to sign up to help in these areas, please notify Tom/Diane (Dee) Brown. Email: [tomdianebrown@yahoo.com](mailto:tomdianebrown@yahoo.com) Diane's cell phone: (call or text) 603-534-3304 Tom's cell phone: (call or text) 603-978-9250

## BIRTHDAYS:

Dee Brown 12/23/23

Kathy David 12-18

Bonnie Hunt 12-22

Carolyn Gahagan 12-27

Hank Hosking 12/26 86 yrs

Lee Gaynier 12-20 95 years old

Karen Sue Alvarado 12-30



Kandy Hull 12-22

Carol Knack 12-22 68 years old

**To Submit a Birthday Announcement, Click [HERE](#)**

## ANNIVERSARY:

Katie / Terry Bradigan 12/28/1976

Robin & Dana Lessard 10th anniversary December 22<sup>nd</sup>

Rich & Cindy Hensley 12-31

Deb and Mick Rieth, 29 years Dec. 30



Darryl Ertel, Jr and Sarah Wilde 25th Silver Anniversary on December 17<sup>TH</sup>

Sue and Bill Flynn -50th Anniversary on  
December 21, 2023



Sandra and Richard Ames-64th Anniversary  
on December 19th

**To Submit an Anniversary Announcement, Click [HERE](#)**

## SICK BAY:

KIP AUBETINE

DAVE HAFEY

DEB REICHEL

## VISITORS:

KALE LADWIG FROM IOWA -GRANDSON OF TIM AND ELAINE LANGE

## JOKE OF THE DAY:

According to the Alaska department of Fish and Game, both male and female reindeer grow antlers in the Summer each year, male reindeer drop their antlers at the beginning of Winter. Female reindeer, however, retain their antlers until after they give birth in the spring. Therefore, according to every



historical rendition depicting Santa's reindeer, every single one of them from Rudolph to Blitzen, had to be female. We really should have known this because only women would be able to drag a fat man in a red velvet suit all around the world in one night... and not get lost!



**Michelle McKinnon**  
**Activities Director**  
**[Activities@betmar.org](mailto:Activities@betmar.org)**



**Melinda Graves**  
**Assistant Director**  
**[Activities@betmar.org](mailto:Activities@betmar.org)**

[Edit](#)

© 2023 Official Betmar Site. Proudly powered by Sydney